



Enterprise Legal Management (ELM)

Analyse Documents

Software

AI, Analysis, and Insights

Make informed decisions based on data. Machine Learning extracts and organizes clauses, obligations, and provisions for analysis and decision-making.

Elevate ELM Analyse Documents software searches, extracts, and displays legal data in grids, dashboards, and visualisations.



Analyse Documents

Batch analysis with cluster visualisation for grouping like documents

Organise and filter information in a configurable data grid

The screenshot displays the Elevate ELM software interface. On the left, a sidebar contains navigation options: HOME, BATCH ANALYSIS, CONTRACT ANALYSIS PROJECT, DATA SCIENCE, MANAGEMENT, and STATS. The main area is divided into three sections:

- Cluster Visualization:** A scatter plot showing documents grouped into clusters based on a selected clustering method (K-Means) and cluster by (Term). A 'Re-Cluster' button is visible.
- Data Grid:** A table with columns for Name, First Party, Second P., Effective Date, Agreement, Term (Start/End), Assignment, Assignee, Auto-renew?, Auto-term?, Termination Provisions, Termination Notice, and Warranty Period. The grid shows 116 contracts extracted.
- Document Analysis:** A detailed view of a document with highlighted clauses. A sidebar on the right lists extracted terms and their definitions.

Annotations with arrows point to these features:

- Batch analysis with cluster visualisation for grouping like documents:** Points to the cluster visualization.
- Organise and filter information in a configurable data grid:** Points to the data grid.
- Automatically find clauses based on user-entered pattern recognition or by using Machine Learning techniques to find any data the users want:** Points to the document analysis view.
- Clearly see data points that are extracted from documents and edit if needed:** Points to the sidebar of extracted terms.

Analyse Documents helps:

Lawyers

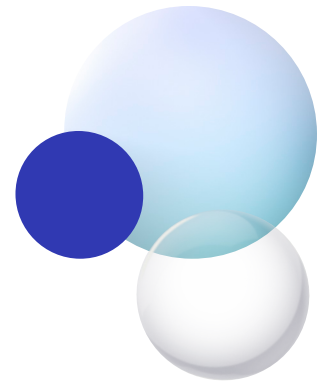
- Automate the analysis of thousands of documents for targeted information in ongoing matters
- Customise software to organisation or firm needs
- Analyse drafting trends, look for missing or inconclusive data

Law Department and Law Firm C-Suite

- Analyse trends in contract drafting
- Improve processes around document management and review
- Customise software to the department or firm's needs

Data Scientists

- Use legal-specific natural language toolkit
- Setup and run software without technical support
- Extract and export large volumes of data into other software



Why select Analyse Documents from Elevate?

● Identify Legal Material

Automatically identify legal data such as dates, currency amounts, durations, and percentages within your documents, and build custom fields.

● Organises and Tag Documents

Upload a batch of unknown documents and automatically group and tag them into clusters by data type.

● Search by Concept

More than a simple word search, find concepts throughout your documents related to a user-specified passage of text.

● De-Duplicate Documents

Automatically identify duplicate and near-duplicate documents (e.g., executed copies, revisions, and amendments).

● Visualise, Export, Integrate

Export your data and generate reports to visualise essential information. Integrate with downstream systems like Manage Contracts or Manage Matters.

● Customise and Scale

Create your data fields, customise users' level of control, implement flexible delegation of tasks and have the ability to upload tens of thousands of documents.